



Dear Friend,

We are hosting our 7th Annual Golf Tournament Fundraiser on Friday, May 27th at Sand Springs Country Club. We hope that you can help us by being a sponsor of this annual event. As you may know, the Golf Tournament is a major fundraiser for us as we continue our important work of caring for the thousands of animals who come to us for help each year.

It is only with the support and generosity of folks like you that we can continue providing the vital services we've offered now for 59 years. Thank you for your continued support!

Sincerely,

Kristen Digwood  
Event Co-Chair

Kimberly Scott  
Event Co-Chair

Peggy Nork  
Director of Development



# SPONSORSHIP OPPORTUNITIES



**CORPORATE  
\$1000**

**LOGO/  
NAME**

in all promotion  
- signage  
- advertising  
- website  
- social media

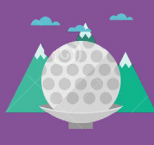
**4-SOME**

4 people to golf in tournament

**PROMOTE U**

a rep from your company can promote your business on a hole at the event\*

**YES, SIGN ME UP!**



**EVENT  
\$500**

**LOGO/  
NAME**

in all promotion  
- signage  
- advertising  
- website  
- social media

**PROMOTE U**

you can promote your business on a hole at the event

\*Call for details

**YES, SIGN ME UP!**



**BEV. CART  
\$250**

**LOGO/  
NAME**

Signage on the Beverage Cart at the event

Only two opportunities available for this sponsorship

*Be the FIRST to call!*

**YES, SIGN ME UP!**



**PROMOTE U  
\$175**

**PROMOTE U**

You can promote your business on a hole at the event

We will provide signage at an assigned hole on the course

You will need to bring your own table, chairs and materials

\*Call for details

**YES, SIGN ME UP!**



**ANIMAL HOLE  
\$125**

**NAME**

Your business name will appear on signage with an available animal at one of the holes throughout the golf course

DOG CAT RABBIT  
please circle one

**YES, SIGN ME UP!**



**HOLE  
\$100**

**NAME**

Your business name will appear on signage at one of the holes throughout the golf course

**YES, SIGN ME UP!**



**FOOD/REG  
\$50**

**NAME**

Your business name will appear on signage at the registration area of the event

**YES, SIGN ME UP!**

I am interested in donating an item for use in a basket raffles or for contest prizes.

Description of item(s) donated.

Prizes valued under \$50 may be combined with another item.

Please complete this form and mail with your check payable to the SPCA of Luzerne County at 524 East Main Street, Wilkes-Barre, PA, 18702 or register online at [spcaluzernecounty.org](http://spcaluzernecounty.org). For questions or for more information contact Jean Kile at 570-825-4111 extension 4 or email at [volunteer@luzernespc.org](mailto:volunteer@luzernespc.org).

Organization (name how you would like it to appear): \_\_\_\_\_

Contact Person: \_\_\_\_\_

Address: \_\_\_\_\_

City: \_\_\_\_\_ State: \_\_\_\_\_ Zip: \_\_\_\_\_

Phone: \_\_\_\_\_

Email: \_\_\_\_\_